

## TimberFormed®

Cavity sliders are all about space. The term 'cavity slider' refers to the cavity pocket (incl. track + carriages) installed within wall framing that allows a door to <slide> inside the wall. The benefit is a solution that leaves clear space on both sides of the wall and opening, encouraging cohesion between spaces.

**CS TimberFormed** is the original cavity slider, first engineered by CS FOR DOORS in 1986. Our design principles were simple: "To create a high-quality cavity slider that was reliable and ran very smoothly".

**CS TimberFormed** is fitted with timber jamb liners and has a heavy duty track, with 'ultra-smooth running' wheels.

The result is a product constructed of heavy-duty aluminium, carriages that have precision ground bearings and jambs in your choice of quality timber. In short, it's quite simply the leading cavity slider on the market.



↑ 1 - CS TimberFormed Single unit with a closed louvre joinery door.

Another quality product from:

## It's all about Space...

### Design Features & Options

- ▮ Available in standard & non-standard sizes.
- ▮ Designed to fit into standard wall framing (90mm x 45mm kiln dry).
- ▮ Brush seals available on request.
- ▮ All aluminium components screwed together for strength and reliability.
- ▮ Standard pine jambs flat for architraves or grooved (rebated) for wall linings. Special sizes, timbers and profiles available on request.
- ▮ Can be specified with almost any choice of door, including our aluminium **CS NewYorker**.
- ▮ Available as Single or Bi-Parting double units, with or without door/s fitted.
- ▮ Door carrying capacity: 90kg using 2-wheel carriages. 4-wheel carriages are supplied for heavier doors.
- ▮ Supplied fully assembled, ready for on-site installation.



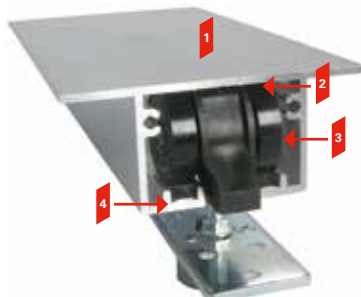
↑ 3 - CS TimberFormed Single unit with traditional joinery door.



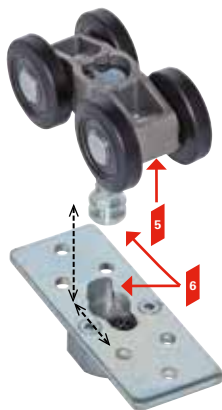
↑ 2 - CS TimberFormed Single unit with classical oversized joinery door and CaviLock CL200 handle.

4 - CS TimberFormed Bi-Parting unit fitted with custom panel joinery door.

# Why specify CS CavitySliders?



**Standard 2-wheel carriage, mounting plate and track\***



**Standard 4-wheel carriage & mounting plate\***

\*NZ Patent 533838.  
Aust patent 2005 202818 (2011)

## Service

The only New Zealand manufacturer of cavity sliders to have NZ covered with 4 branches. All branches offer a free site measure & quote.

## We're Local

CS FOR DOORS is 100% New Zealand owned and our products are 100% New Zealand Made.



↑ Come see our door systems at CS FOR DOORS' NZIA Award winning Head Office & Showroom

## Quality

Our aim is to make the best quality cavity sliders. Therefore every component is uniquely designed with this in mind.

## Technology & Innovation

Our engineers focus on constantly developing new products & refining existing ones. That's why our products come with a number of unique features. A few exclusive **CS CavitySliders** features (refer to pics on left):

- 1 Heavy duty one-piece extruded aluminium track.
- 2 Minimal clearance means carriages/wheels cannot jam or jump off the track.
- 3 Large diameter wheels with precision ground bearings for smooth running.
- 4 Radiused track reduces friction and allows dust to be pushed into the gutters so the door always slides smoothly.
- 5 4-wheel carriages are standard on all doors over 90kg. Body made from cast stainless steel for strength & reliability.
- 6 **CarriSnap™** quick release system allows easy removal of the door from the cavity pocket.

## Product Range

We have over 50 standard products. If you require a custom solution, we can make to order.

## Quality Assured

CS CavitySliders are BRANZ appraised.



## Our Guarantee

**WE GUARANTEE PRODUCT WITH OUR SERIAL CODES FOR UP TO TEN YEARS\***

\*Guarantee conditions apply. Contact CS FOR DOORS for details.

Check out the full range of products and use our online calculator at:

[www.csfordoors.co.nz](http://www.csfordoors.co.nz)

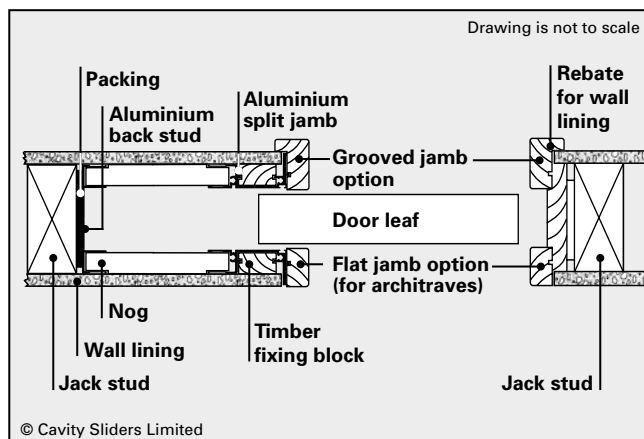
## Technical Information

### How to specify (example)

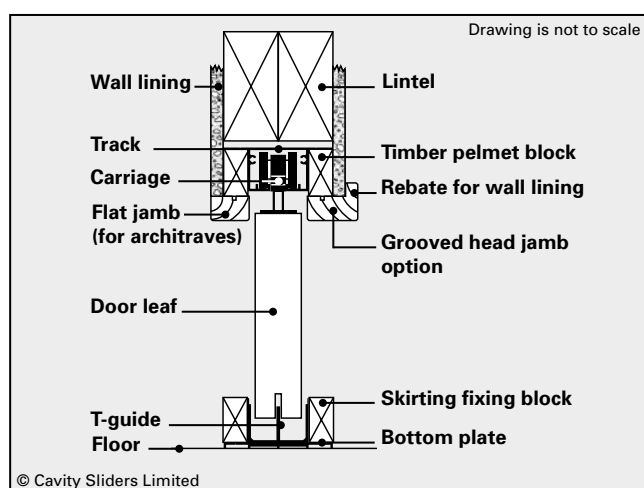
Product:	~ CS TimberFormed by CS FOR DOORS
Location:	~ Dining room
Door leaf dimensions:	~ 2400mm x 1200mm
Door type:	~ 38mm joinery door
Door finish:	~ Paint
Single or Bi-Parting:	~ Single
Jamb type & finish:	~ Timber flat (for architraves); clear pine
Framing size & material:	~ 90mm timber framing
Wall lining thickness:	~ 10mm
Door gear type & finish:	~ CS 240kg track system
Handle type:	~ CaviLock CL200 A1010 See CaviLock on our website for more options

Full specifications are available on [www.masterspec.co.nz](http://www.masterspec.co.nz)

### Plan view (CAD)



### Elevation (CAD)



### Useful formulas (online calculator @ [www.csfordoors.co.nz](http://www.csfordoors.co.nz))

Dimension Required	Single	Bi-Parting
Trim height*	DH + 95	DH + 95
Trim width*	(DWx2) + 30	(DWx4) + 10
Distance between jambs*	DW - 31	(DWx2) - 42
Distance over jambs (Arch)	DW + 13	(DWx2) + 6
Distance over jambs (Grvd)	DW + 31	(DWx2) + 20
Floor to top of head (Arch)	DH + 38	DH + 38
Floor to top of head (Grvd)	DH + 49	DH + 49
Floor to underside of head*	DH + 18.5	DH + 18.5

DH = Door Height DW = Door Width  
\* = Same calculations for both Architrave (Arch) & Grooved (Grvd) jambs  
Note: All dimensions are in millimetres

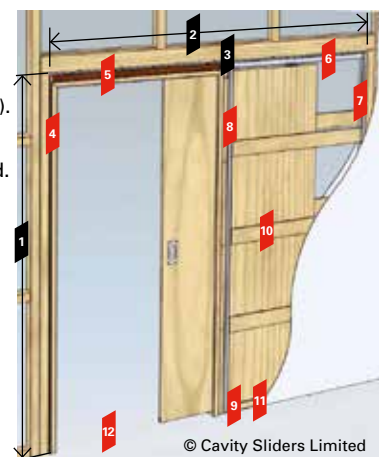
### Detail Options

- Full-Height™
- CornerMeeting™
- NoClosingJamb™
- ShadowLine™
- SquareStop™
- Servery™
- Extra-WideJambs™
- Protrude100™

Incorporate any of the above architectural detail options with the CS TimberFormed cavity slider to create a specific look or to provide a unique solution.

### Standard CS TimberFormed Features

- 1 Trim height
- 2 Trim width
- 3 Lintel (part of wall framing).
- 4 Closing jamb  
Always quoted as standard. Can be omitted if not needed.
- 5 Jambs  
Available as:
  - flat jambs ready for architraves or
  - grooved (rebated), ready for wall linings.
- 6 Track in one piece  
Heavy-duty aluminium.
- 7 Back stud  
Strong and made of reliable, heavy-duty aluminium.
- 8 Split jambs  
Timber jamb screw fixed to aluminium split jamb.
- 9 Bottom plate  
One-piece in aluminium.
- 10 Pine nogs  
Fitted on both sides and offset for adjacent wall fixing.



Extra nogs are available, or can be replaced with a full sheet of ply on one side, if more rigidity or fixing is needed.

- 11 Skirting blocks  
Fitted on either side of the bottom plate, to fix both linings and skirting.
- 12 No visible floor track or guide  
A hidden T-guide at the base of the cavity pocket guides the door through opening.

**Cavity Sliders Limited**  
Auckland Head Office  
5 - 7 Rakino Way  
Mt Wellington  
PO Box 112349, Penrose  
Auckland 1642, NZ  
T 09 276 0800  
F 09 276 2525  
info@csfordoors.co.nz

[www.csfordoors.co.nz](http://www.csfordoors.co.nz)

**Bay of Plenty / Waikato**  
40 Newton Street  
Mt Maunganui  
T 07 928 0800  
F 07 928 2525  
salesbop@csfordoors.co.nz

[info@csfordoors.co.nz](mailto:info@csfordoors.co.nz)

**Wellington**  
33 Grenada Business Park  
16 Jamaica Drive  
Grenada North  
T 04 473 9994  
F 04 473 9995  
saleswgt@csfordoors.co.nz

A division of:  
**GROUP**  
Innovative door solutions

**Christchurch**  
6 Marylands Place, Middleton  
T 03 348 6158  
F 03 348 6150  
saleschch@csfordoors.co.nz